

The Great Grid Upgrade

Sea Link

Sea Link

Volume 2: Plans and Drawings

Document 2.5.3: Work Plans - Offshore

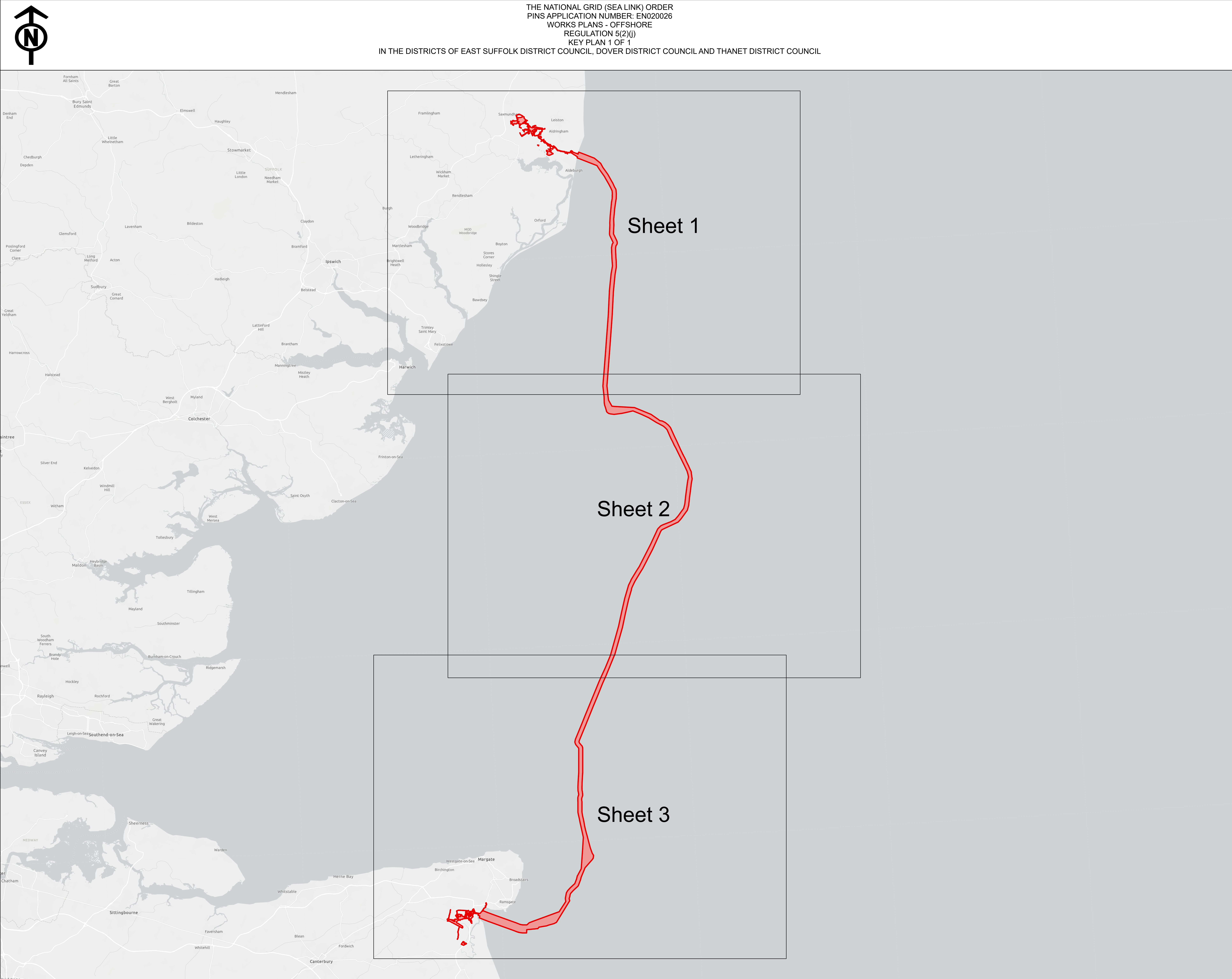
Planning Inspectorate Reference: EN020026

Version: A
March 2025

Infrastructure Planning (Applications: Prescribed Forms and Procedure)
Regulations 2009 Regulation 5(2)(j)

nationalgrid

Page intentionally left blank



Application Document 2.5.3

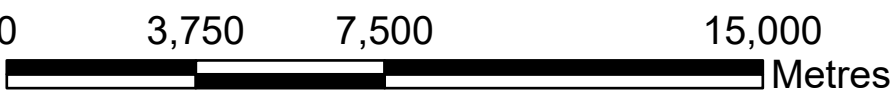
Legend

- ☒ Order Limits
☐ Detailed sheet

Notes

1. This plan is scaled to paper size A0, therefore any prints taken at smaller sizes will affect accuracy of the measurement units and should not be scaled against.
2. For further information on construction please refer to the construction section of the Environmental Statement.
3. Reference should be made to the Guide to the Plans (Document Ref 2.1) which provides further information on what the plans show.

Coordinate System: British National Grid
Sheet X Centroid Coordinate: N/A Sheet Y Centroid Coordinate: N/A



BACKGROUND MAPPING INFORMATION HAS BEEN REPRODUCED FROM THE ORDNANCE SURVEY BY PERMISSION OF ORDNANCE SURVEY OF THE CONTROLLER OF HIS MAJESTY'S STATIONERY OFFICE. CROWN COPYRIGHT ORDNANCE SURVEY © - 100024241. BLUESKY INTERNATIONAL LTD © NATIONAL GRID ELECTRICITY ESRI COMMUNITY MAPS CONTRIBUTORS, ESRI UK, ESRI, HERE, GARMIN, FOURSQUARE, GEOTECHNOLOGIES, INC, METINASA, USGS

A	06/03/25	For Submission	JF	SC	JW
Issue	Date	Remarks	Drawn	Checked	Approved

<u>Title</u>

THE NATIONAL GRID (SEA LINK) ORDER
PINS APPLICATION NUMBER: EN020026
WORKS PLANS - OFFSHORE
REGULATION 5(2)(j)
KEY PLAN 1 OF 1



Application Number

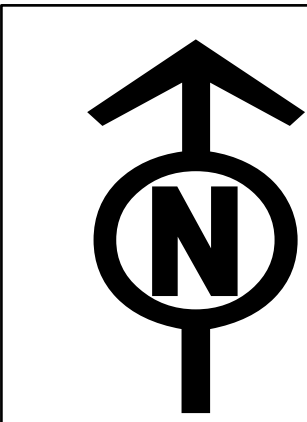
EN020026

National Grid Drawing Reference

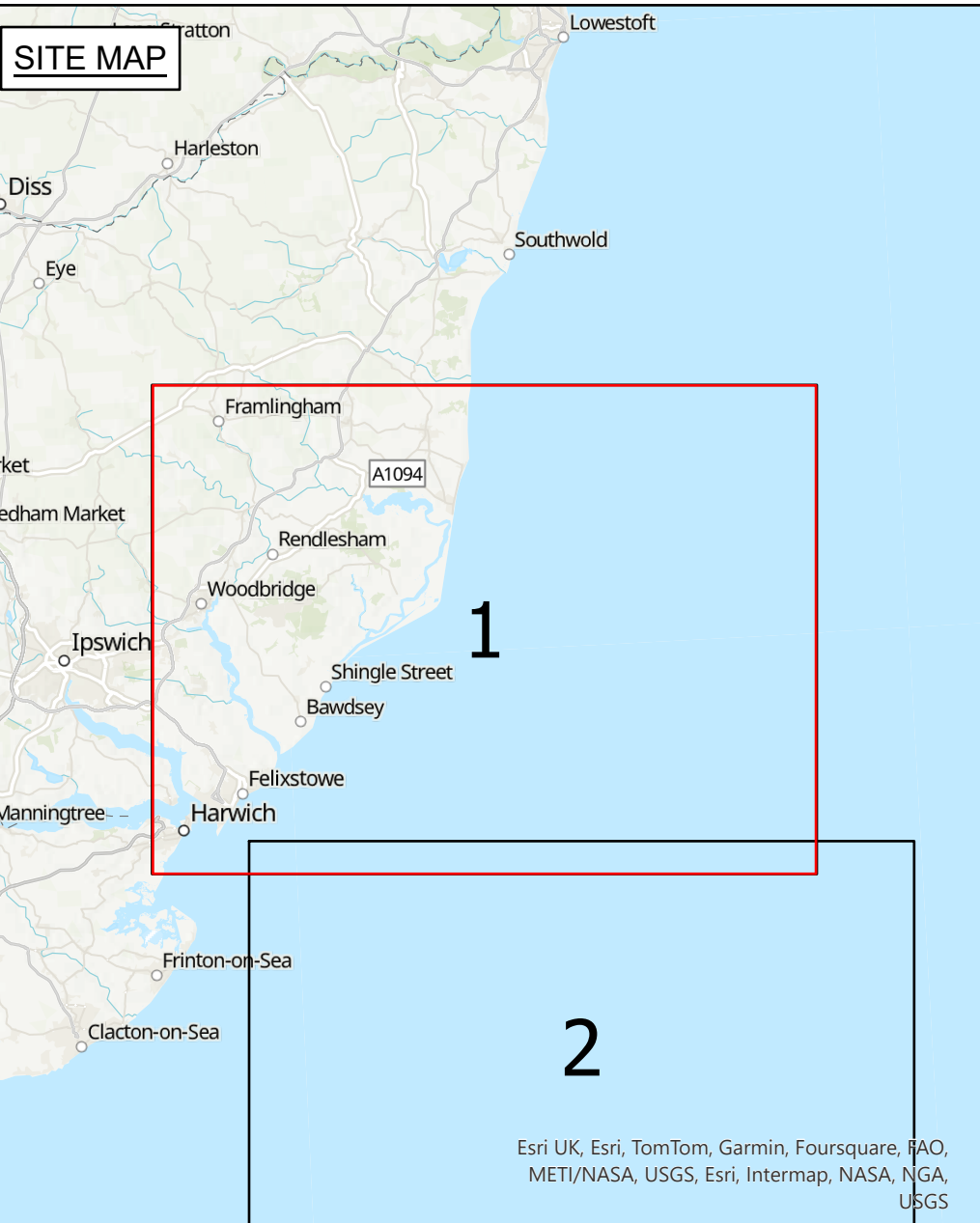
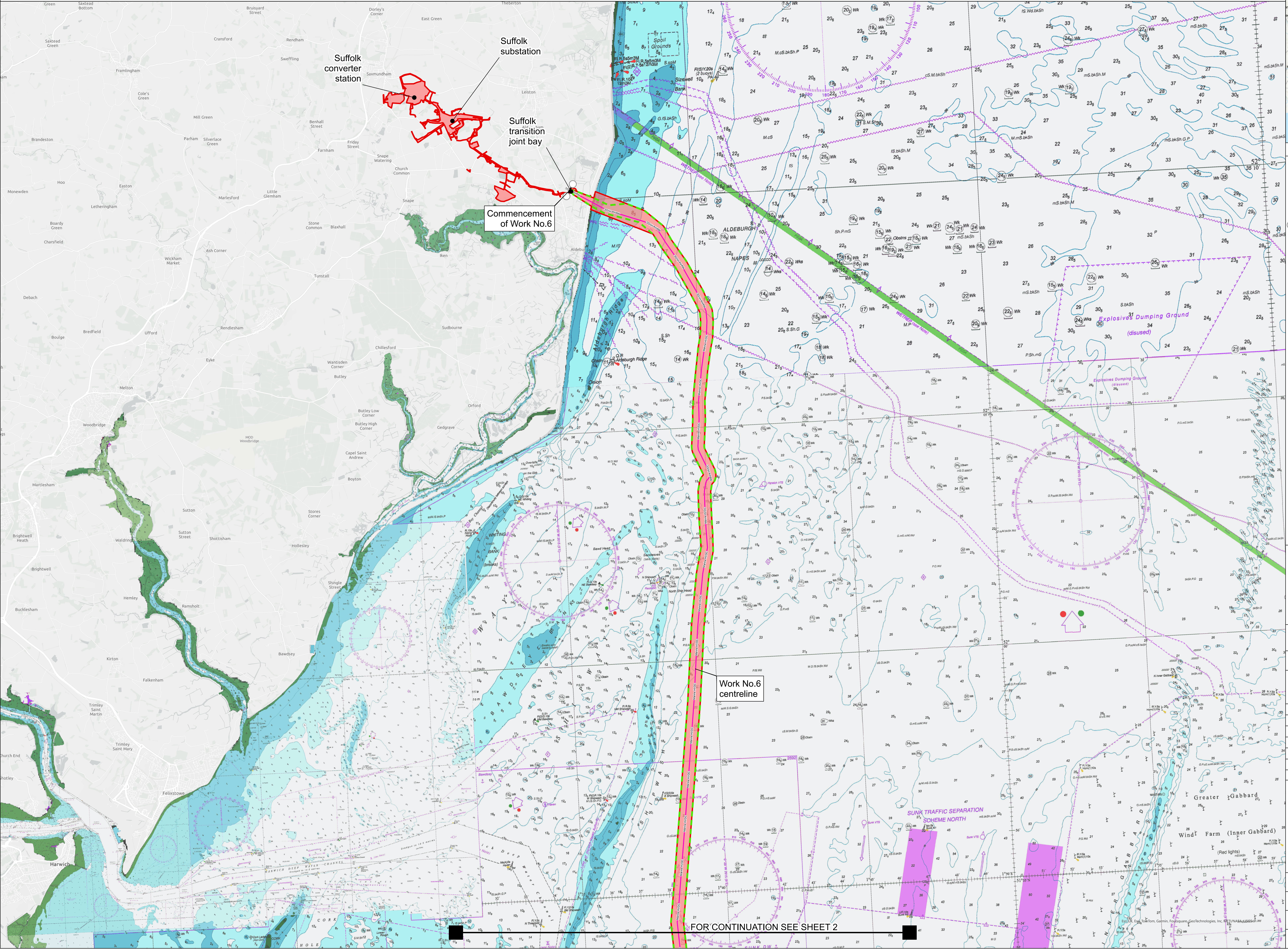
DCO/M/KP/SS/0417

<u>Scale</u>	<u>Sheet Size</u>	<u>Sheet</u>	<u>Issue</u>
--------------	-------------------	--------------	--------------

1:150,000	A0	SHEET 1 OF 1	A
-----------	----	--------------	---



THE NATIONAL GRID (SEA LINK) ORDER
PINS APPLICATION NUMBER: EN020026
WORKS PLANS - OFFSHORE
REGULATION 5(2)(j)
SHEET 1 OF 3
IN THE DISTRICT OF EAST SUFFOLK DISTRICT COUNCIL



Application Document 2.5.3

- Legend**
- Order Limits
 - Proposed marine High Voltage Direct Current (HVDC) cable alignment
 - Limit of deviation: High Voltage Direct Current (HVDC) marine cables
 - Commencement of work

Notes

1. This plan is scaled at paper size A0, therefore any prints taken at smaller sizes will affect accuracy of the measurement units and should not be scaled against.
2. These plans show the Order Limits and potential locations for the works. Due to the need for future flexibility, National Grid will be applying for Order Limits and Limits of Deviation within its Development Consent Order, within which any final alignment would lie. Therefore the cable alignment, converter stations, substations and pylon locations should be treated as indicative only.
3. For further information on construction please refer to the construction section of the Environmental Statement.
4. Reference should be made to the Guide to the Plans (Document Ref 2.1) which provides further information on what the plans show.

Coordinate System: British National Grid
Sheet X Centroid Coordinate: 648888 25 Sheet Y Centroid Coordinate: 247191 86
A transformation from WGS 1984 to British National Grid coordinate system has been applied to marine basemapping.



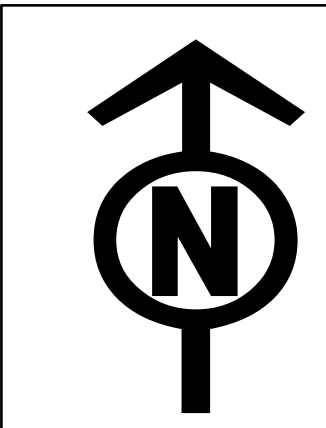
BACKGROUND MAPPING INFORMATION HAS BEEN REPRODUCED FROM THE UK HYDROGRAPHIC OFFICE
© BRITISH CROWN AND OCEANWISE, 2025. ALL RIGHTS RESERVED. LICENSE NUMBER EMS-EX01-882114. NOT TO BE USED FOR NAVIGATION
© NATIONAL GRID ELECTRICITY

Issue	Date	Remarks	Drawn	Checked	Approved
A	06/03/25	For Submission	JF	SC	JW

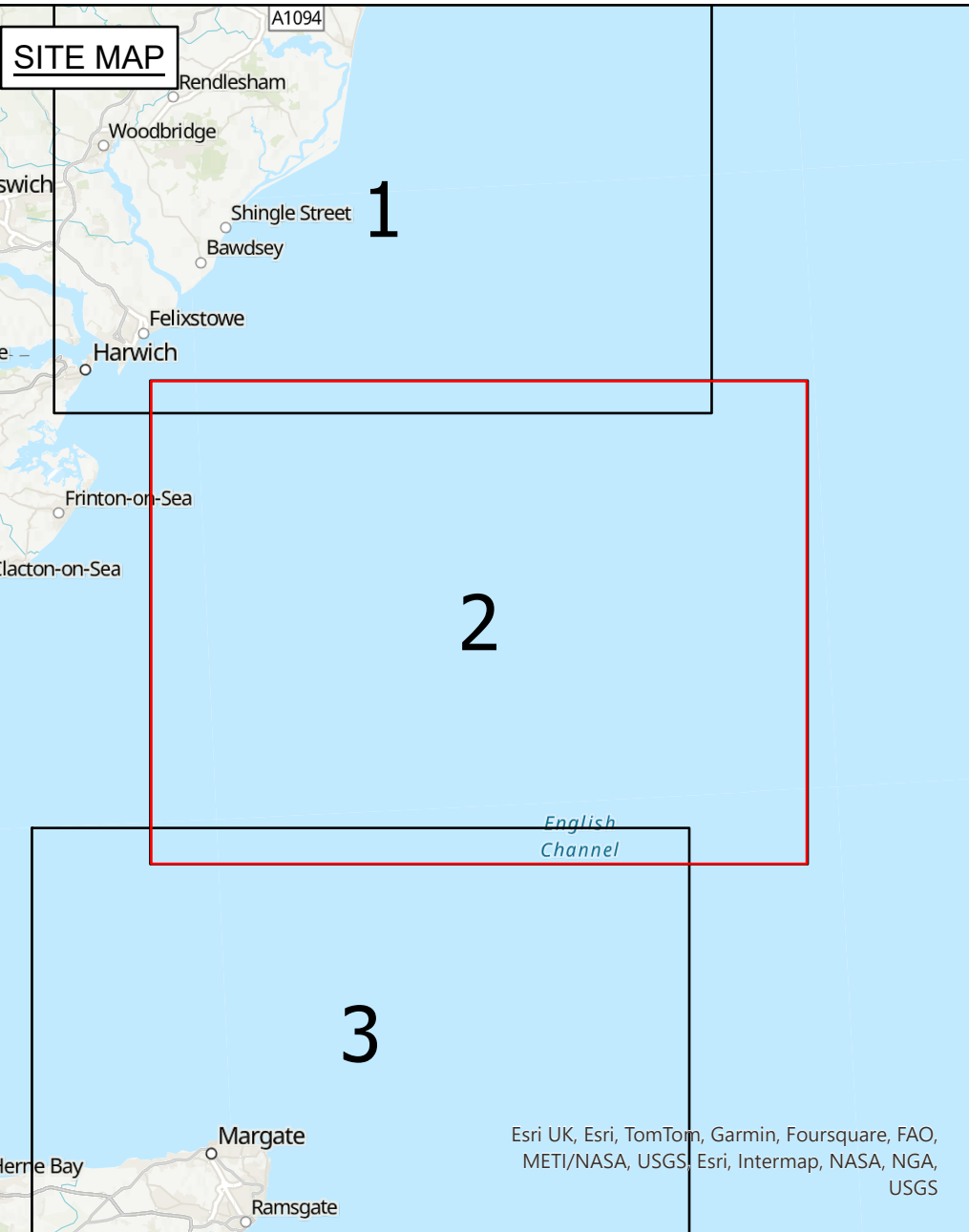
Title

THE NATIONAL GRID (SEA LINK) ORDER
PINS APPLICATION NUMBER: EN020026
WORKS PLANS - OFFSHORE
REGULATION 5(2)(j)
SHEET 1 OF 3

nationalgrid			
Application Number			
EN020026			
National Grid Drawing Reference			
DCO/MW/PS/0414			
Scale	Sheet Size	Sheet	Issue
1:50,000	A0	SHEET 1 OF 3	A






THE NATIONAL GRID (SEA LINK) ORDER
PINS APPLICATION NUMBER: EN020026
WORKS PLANS - OFFSHORE
REGULATION 5(2)(j)
SHEET 2 OF 3



Application Document 2.5.3

Legend

-  Order Limits
-  Proposed marine High Voltage Direct Current (HVDC) cable alignment
-  Limit of deviation: High Voltage Direct Current (HVDC) marine cables

Notes

1. This plan is scaled at paper size A0, therefore any prints taken at smaller sizes will lack accuracy of the measurement units and should not be scaled against.
2. These plans show the Order Limits and potential locations for the works. Due to the need for future flexibility, National Grid will be applying for Order Limits and Limits of Deviation within its Development Consent Order, within which any final alignment would lie. Therefore the cable alignment, converter stations, substations and other key elements should be treated as indicative only.
3. For further information on construction please refer to the construction section of the Environmental Statement.
4. Reference should be made to the Guide to the Plans (Document Ref 2.1) which provides further information on what the plans show.

Coordinate System: British National Grid
Sheet X Centroid Coordinate: 656416.31 Sheet Y Centroid Coordinate: 211918.8
A transformation from WGS 1984 to British National Grid coordinate system has been applied to marine basemapping.



BACKGROUND MAPPING INFORMATION HAS BEEN REPRODUCED
FROM THE UK HYDROGRAPHIC OFFICE.
© BRITISH CROWN AND OCEANWISE, 2025. ALL RIGHTS
RESERVED. LICENSE NUMBER EMS-EK001-882114. NOT TO
BE USED FOR NAVIGATION.
© NATIONAL GRID ELECTRICITY

A	06/03/25	For Submission	JF	SC	JW
Issue	Date	Remarks	Drawn	Checked	Approved

THE NATIONAL GRID (SEA LINK) ORDER
PINS APPLICATION NUMBER: EN020026
WORKS PLANS - OFFSHORE
REGULATION 5(2)(j)
SHEET 2 OF 3

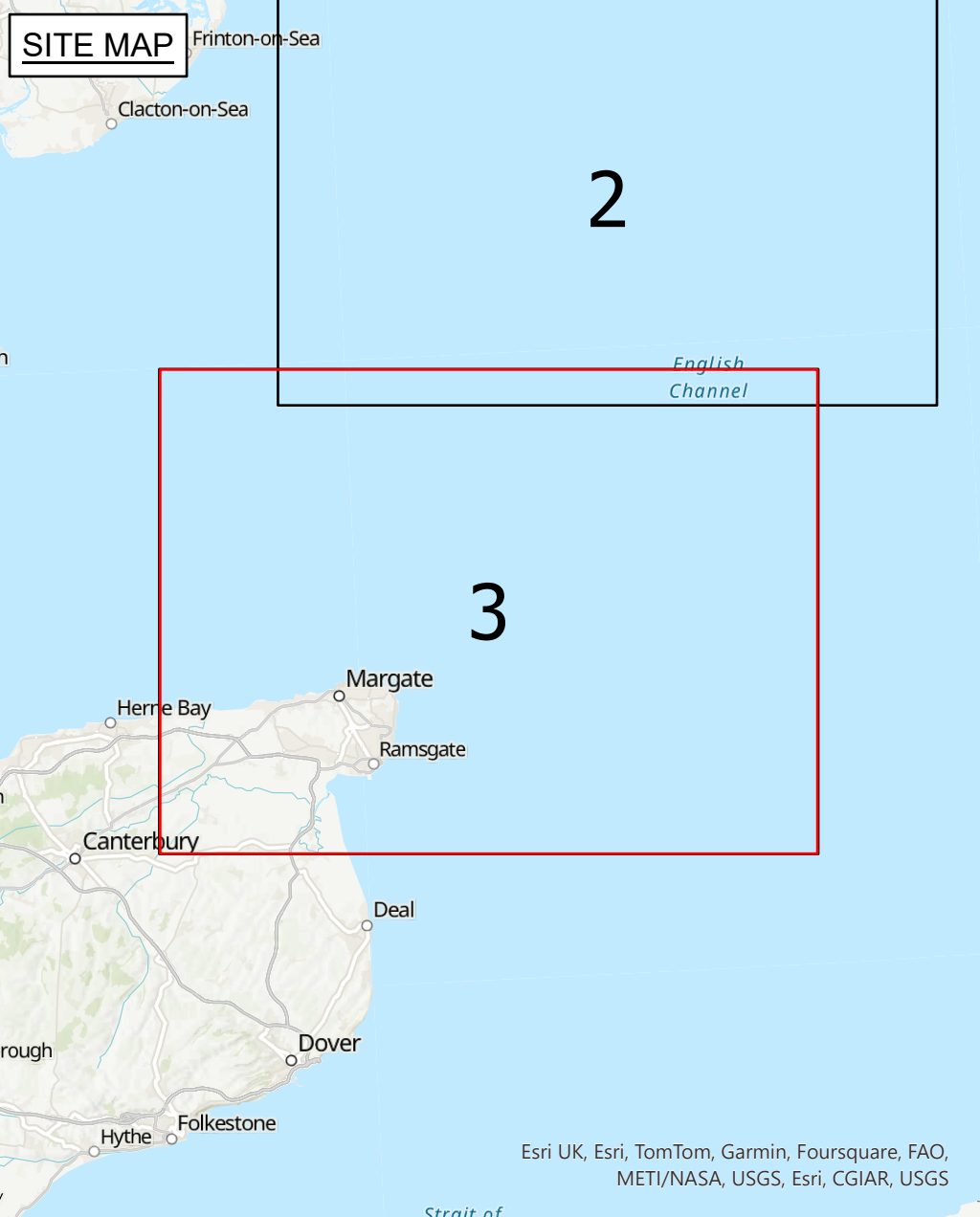
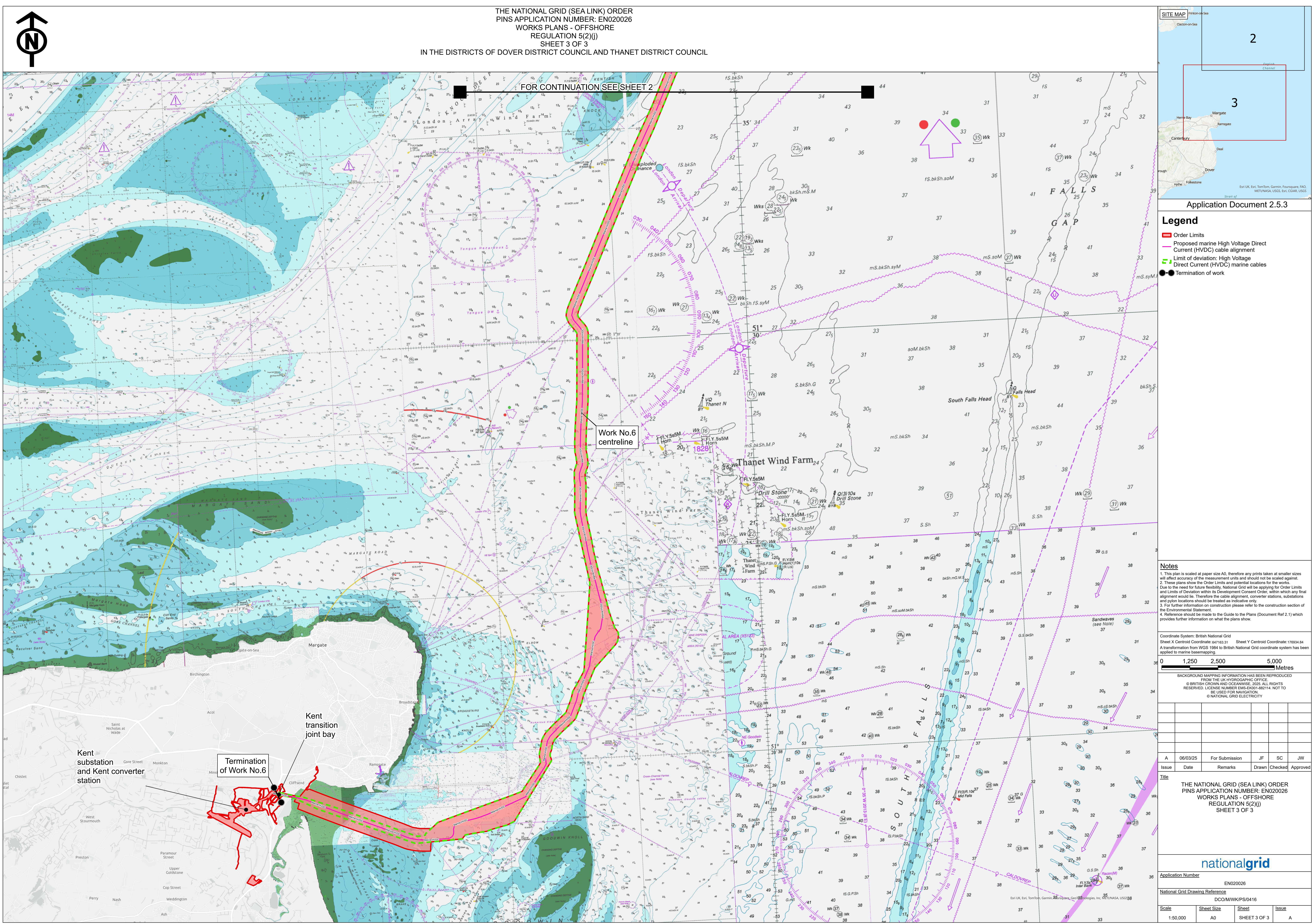
nationalgrid

Application Number
EN020026

National Grid Drawing Reference

Scale	Sheet Size	Sheet	Issue
1:50,000	A0	SHEET 0050	A

COPYRIGHT: NOT TO BE REPRODUCED WITHOUT THE WRITTEN PERMISSION OF NATIONAL GRID ELECTRICITY TRANSMISSION Plc



Application Document 2.5.3

Legend

- Order Limits
- Proposed marine High Voltage Direct Current (HVDC) cable alignment
- Limit of deviation: High Voltage Direct Current (HVDC) marine cables
- Termination of work

Notes

1. This plan is scaled at paper size A0, therefore any prints taken at smaller sizes will affect accuracy of the measurement units and should not be scaled against.
2. These plans show the Order Limits and potential locations for the works.
Due to the need for future flexibility, National Grid will be applying for Order Limits and Limits of Deviation within its Development Consent Order, within which any final alignment would lie. Therefore the cable alignment, converter stations, substations and pylon locations should be treated as indicative only.
3. For further information on construction please refer to the construction section of the Environmental Statement.
4. Reference should be made to the Guide to the Plans (Document Ref 2.1) which provides further information on what the plans show.

Coordinate System: British National Grid
Sheet X Centroid Coordinate: 647163.31 Sheet Y Centroid Coordinate: 176934.84
A transformation from WGS 1984 to British National Grid coordinate system has been applied to marine basemapping.

0 1,250 2,500 5,000
Metres

BACKGROUND MAPPING INFORMATION HAS BEEN REPRODUCED FROM THE UK HYDROGRAPHIC OFFICE
© BRITISH CROWN AND OCEANWISE, 2025. ALL RIGHTS RESERVED. LICENSE NUMBER EMS-EX001-882114. NOT TO BE USED FOR NAVIGATION
© NATIONAL GRID ELECTRICITY

A	06/03/25	For Submission	JF	SC	JW
Issue	Date	Remarks	Drawn	Checked	Approved

**THE NATIONAL GRID (SEA LINK) ORDER
PINS APPLICATION NUMBER: EN020026
WORKS PLANS - OFFSHORE
REGULATION 5(2)(j)
SHEET 3 OF 3**

nationalgrid

Application Number: EN020026

National Grid Drawing Reference: DCO/MW/KS/PS/0416

Scale	Sheet Size	Sheet	Issue
1:50,000	A0	SHEET 3 OF 3	A